

*How safe are you
and your family?*



Protect your home with
quality security products from

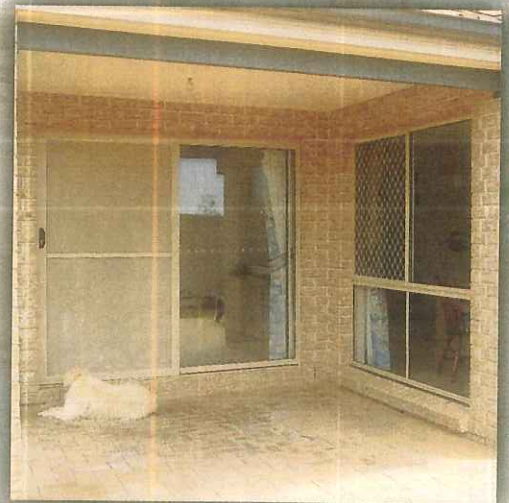
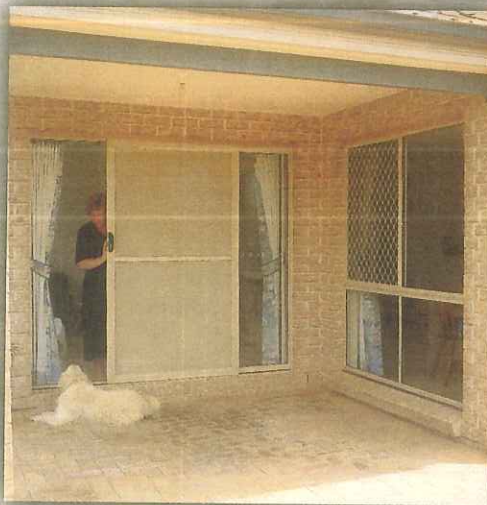
DARLEY
ALUMINIUM



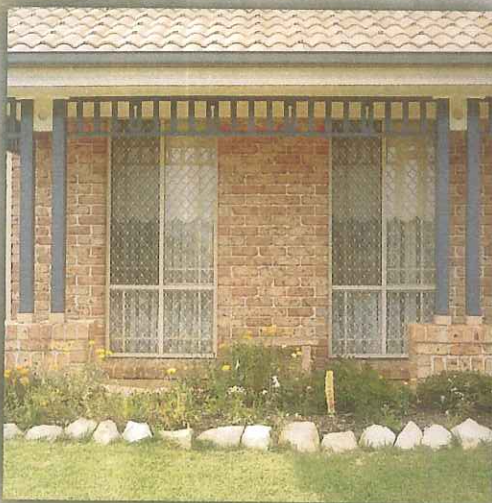
Unfortunately break-ins are becoming a way of life in our suburbs, new or established. Fitting attractive single or double diamond grilles will keep unwanted guests out and active little ones inside.



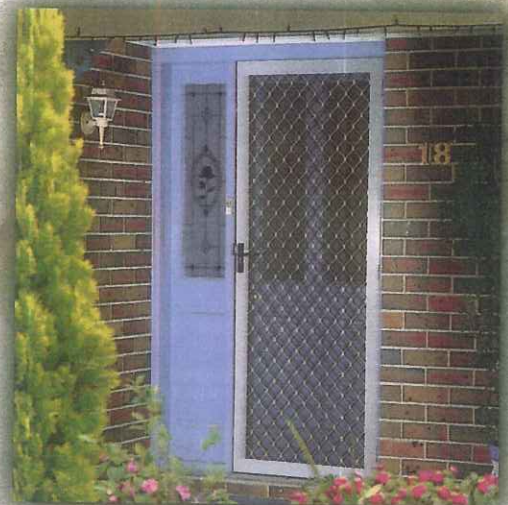
Hinged security door
Colour: wizard blue



Now you see me...now you don't
If you have cats or dogs, why not fit one way DVA mesh? It will last and last.
Pet doors also made to suit window or door grilles for your convenience.



Four-piece window grille
Colour: stone beige



Front entry, no side lite
Colour: APO grey

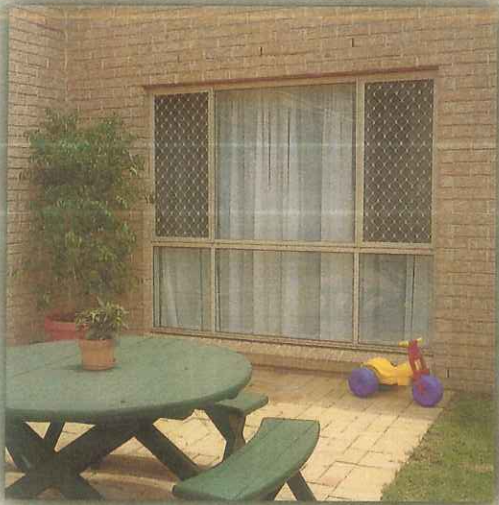
Grilles produced to meet the Australian Standard.
Your dealer needs to meet AS2803 and AS2804 for manufacture and installation of grilles.



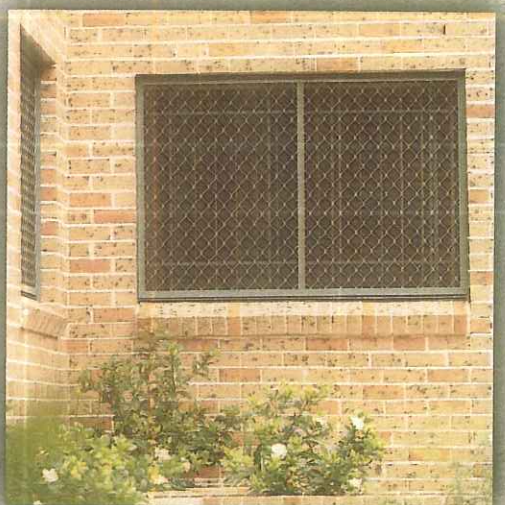
Sliding door double panel
Colour: wizard blue



Sliding door single panel
Colour: primrose



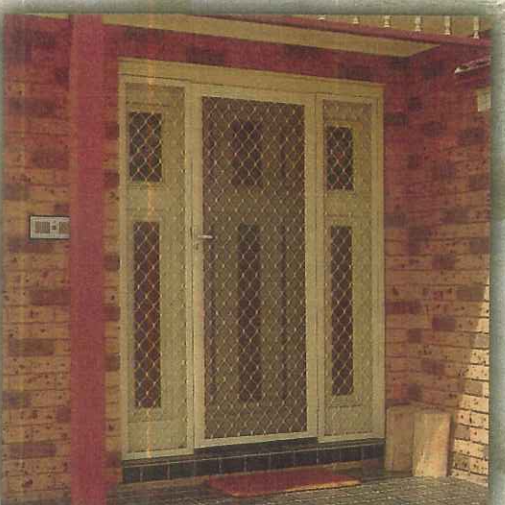
Window grilles to sliding sashes only
Colour: stone beige



Full grille
Colour: bond river gum



Double diamond grille for added safety
Colour: primrose



Front entry with side lites
Colour: primrose

OPTIONAL COMPONENTS

WHITE	WHITE BIRCH	PRIMROSE
STONE BEIGE	POTTERY	HAMMERSLEY BROWN
WIZARD	DEEP OCEAN	CLEAR ANOD
HAWTHORN GREEN	WOODLAND GREY	NOTRE DAME
CHARCOAL	BLACK	BRONZE ANOD
APO GREY	MIST GREEN	CLARET

ANOTEC DARK GREY	PAPERBARK

The colours represented above are as close to the original finish colours as the printing process will allow.

Ask your dealer for suggestions on how to best protect your family home and possessions in a colour that would suit your decor from our large range of security products.

DARLEY
ALUMINIUM

Proudly protecting Australian families



Pet Door



Inventco Sliding (Water) Door Closer



Hinged Door Lock – 3 Point Lock



Hinged Door Closers



Bass Latch (Suits Fly Doors)



Sliding Door Lock

Lance Steel Security Pty Ltd

1089 Victoria Road , West Ryde , NSW 2114

Telephone: 1300 362 825 - Facsimile: 02 9858.4069

www.lancesecuritydoor.com.au Security Lic. 407818832

Sydney ABN 21 117 518 779

Karat Range



MT 24 N S



Version S

Resettable, armoured high-security safe lock, 'Secu-Safe', ECB S certified according to EN 1300 class B, with 2 keys, 10 levers, key captive, 50,000,000 different combinations.
More security in case of losing the key – immediately resettable to a new key.

Art.-No.	EAN	Exterior H x W x D	Interior H x W x D	Door H x W	Weight	Volume
	40 03482	mm	mm	mm	kg	l
MT 24 N S	16050 3	340 x 430 x 390	250 x 348 x 294	250 x 336	43	25,8
MT 26 N S	19090 6	530 x 430 x 390	440 x 348 x 294	440 x 336	60	45,3



MT 24 N E



Version E

Electronic combination lock, 'SecuTronic', ECB S certified according to EN 1300 class B, with intelligent menu-driven operation, administration of up to 10 users, 111,000,000 different combinations possible, incl. batteries.
The locking armature protrudes 16 mm.

Art.-No.	EAN	Exterior H x W x D	Interior H x W x D	Door H x W	Weight	Volume
	40 03482	mm	mm	mm	kg	l
MT 24 N E	19150 7	340 x 430 x 390	250 x 348 x 294	250 x 336	43	25,8
MT 26 N E	19020 3	530 x 430 x 390	440 x 348 x 294	440 x 336	60	45,3



MT 26 N E

Home Safe Range



H 1 S



Version S

Security safe lock, 'Secu-Safe', ECB S certified according to EN 1300 class A, with 2 keys, 9 levers, more than 1,000,000 different combinations.

Art.-No.	EAN	Exterior H x W x D	Interior H x W x D	Door H x W	Weight	Volume
	40 03482	mm	mm	mm	kg	l
H 1 S	14900 3	320 x 420 x 376	243 x 343 x 294	243 x 333	33,5	24,5



H 1 E



Version E

Electronic combination lock, 'SecuTronic', ECB S certified according to EN 1300 class B, 1,000,000 different combinations possible, incl. batteries. The locking armature protrudes 13 mm.

Art.-No.	EAN	Exterior H x W x D	Interior H x W x D	Door H x W	Weight	Volume
	40 03482	mm	mm	mm	kg	l
H 1 E	26290 0	320 x 420 x 376	243 x 343 x 294	243 x 333	33,5	24,5



H 3 E C4 EWS

Art.-No.	EAN	Exterior H x W x D	Interior H x W x D	Door H x W	Weight	Volume
	40 03482	mm	mm	mm	kg	l
H 3 C4 EWS	26090 6	257 x 347 x 298	216 x 340 x 243	184 x 276	16,0	17,8
H 3 E C4 EWS	26190 3	257 x 347 x 298	216 x 340 x 243	184 x 276	16,0	17,8

Fire Safe Range



FP 3 E

Fire protective

- Document safe – protection against burglary and fire
- Body and door double-walled
- **fully and massively filled with insulating concrete**
- Door with double-sided locking
- Safe passed fire protection test successfully: interior below 177° C after 1 hour – good protection for your documents
- Body with specially designed fire fold
- Prepared for floor fixing – incl. fixing material

NEW



FP 4 E available in spring 2007

- With modern, self-programmable electronic combination lock
- You can change your secret code at any time
- With user code and master code
- Battery operated (4 x 1,5 V Mignon)
- No electrical supply necessary
- Additional lock for emergency opening



FP 4 E

Art.-No.	EAN	Exterior H x W x D	Interior H x W x D	Weight	Volume
	40 03482	mm	mm	kg	l
FP 3 E	24940 6	300 x 410 x 342	220 x 330 x 225	28,0	16,3
FP 4 E	20380 4	345 x 485 x 420	218 x 358 x 268	38,0	20,0

Point Safe Range



P 2 S



Version S

with safe lock and 2 keys

Art.-No.	EAN	Exterior H x W x D	Interior H x W x D	Door H x W	Weight	Volume
	40 03482	mm	mm	mm	kg	l
P 1 S	24840 9	180 x 280 x 200	173 x 273 x 141	135 x 188	8,5	6,7
P 2 S	24850 8	255 x 350 x 300	248 x 343 x 241	188 x 230	16,5	20,5
P 3 S	24950 5	320 x 442 x 350	310 x 435 x 288	268 x 317	25,0	38,8



P 3 E



Version E

with self-programmable electronic lock, battery operated (1,5 V Mignon), you can change your secret code at any time, with Master code - self programmable, no electrical supply necessary, additional lock for emergency opening, the locking armature protrudes 16 mm

Art.-No.	EAN	Exterior H x W x D	Interior H x W x D	Door H x W	Weight	Volume
	40 03482	mm	mm	mm	kg	l
P 1 E	26760 8	180 x 280 x 200	173 x 273 x 141	135 x 188	8,6	6,7
P 2 E	24810 2	255 x 350 x 300	248 x 343 x 241	188 x 230	16,5	20,5
P 3 E	24820 1	320 x 442 x 350	310 x 435 x 288	268 x 317	25,0	38,8
P 4 E	24830 0	500 x 416 x 350	490 x 410 x 288	423 x 290	33,0	57,9



P 4 E



P 1 E KA 1



Hotel safes

with self-programmable electronic lock, Version KA1 and KA2 with keyed-ally emergency opening lock

Art.-No.	EAN	Exterior H x W x D	Interior H x W x D	Door H x W	Weight	Volume
	40 03482	mm	mm	mm	kg	l
P 1 E KA 1	29610 3	180 x 280 x 200	173 x 273 x 141	135 x 188	8,6	6,7
P 3 E KA 2	24790 7	320 x 442 x 350	310 x 435 x 288	268 x 317	25,0	38,8

Safe box



Box 1 E

Art.-No.	EAN	Exterior H x W x D	Interior H x W x D	Weight	Volume
Box 1 E	40 01482 24910 9	mm 97 x 230 x 383	mm 40-70 x 200 x 255	kg 6,3	l 3,3
Base Box 1 E	24930 7	Additional screw-down base			



Budget Range



Smart 2E

Smart Safe 2 E

- single-walled
- compact freestanding home safe
- with resettable electronic lock
- overriding emergency lock

Art.-No.	EAN	Exterior H x W x D	Interior H x W x D	Weight	Volume
SMART 2E	40 01482 22020 7	mm 260 x 350 x 280	mm 254 x 344 x 218	kg 11,2	l 19,0



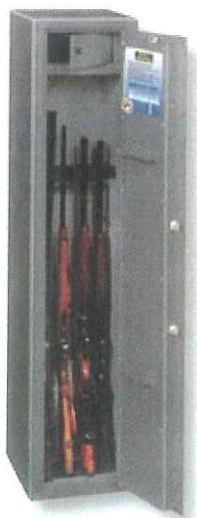
Universal 2E

Universal Safe 2E

- single-walled
- compact freestanding home safe
- with resettable electronic lock
- overriding emergency lock

Art.-No.	EAN	Exterior H x W x D	Interior H x W x D	Weight	Volume
UNI 2E	40 01482 21040 6	mm 260 x 350 x 260	mm 256 x 346 x 210	kg 11,0	l 18,6

Gun Cabinets



Ranger A 5

Ranger A 5

SECURITY LEVEL A

Single-walled gun cabinet for 5 rifles

- light height: 1250 mm
- security level A according to VDMA 24992, 5/95
- with lockable interior compartment and brackets at the inner side of the door
- double-walled door, 60 mm
- body of 3 mm steel with specially designed fire fold
- three-sided locking through strong round bolts
- prepared for wall and floor fixing
- high-quality workmanship
- German Technology
- tested in the BURG-WÄCHTER laboratory

Art.-No.	for rifles	EAN	Exterior H x W x D	Weight
A 5	5	40 01482 02970 1	mm 1450 x 300 x 335	kg 64

Lance Locksmiths Pty.Ltd.

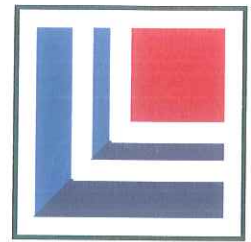
1089 Victoria Road, West Ryde, NSW 2114

Telephone: 02 9804.6466 - Facsimile: 02 9858.4069

www.lancelocksmiths.com.au

Sydney Australia

ABN 41 100 845 743



Retractable Flyscreens

CRL Euro Retractable Window Screens

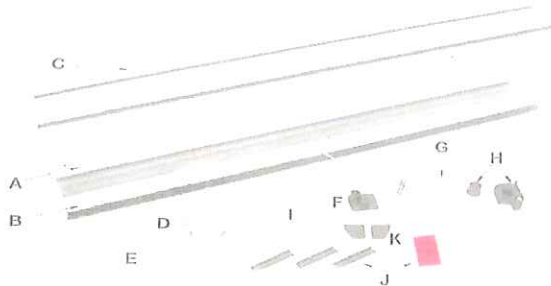
SAVE 10%

NEW!

- Complete With Easy-to-Follow Instructions
- Three Decorative Powder Coated Finishes

CRL Euro Retractable Window Screens have a big maximum inside window height of 1.67 m (66"). Each Screen Kit includes: powder coated extruded aluminium lineals, durable 18 x 16 mesh gray fiberglass screen wire, quality mounting hardware, and easy-to-follow instructions. You can choose from four maximum opening widths in three beautiful colors, creating a profitable addition to your screening services.

Screens are interior inside jamb mounted, and can be left in place all year, eliminating the need for seasonal removal and installation. The CRL Euro Retractable Window Screen has top and bottom expanding feet that securely wedge the frame into the inside of the jamb.



- | | |
|-------------------------------|---|
| A: Cassette | G: Cassette Side Shoes With Springs |
| B: Pull Bar | H: Bushing and End Caps |
| C: Side Guide Channels | I: Screw Covers |
| D: Channel Bottom Shoes | J: Channel Inserts With Adhesive Strips |
| E: Pull Bar End Cap | K: Channel Bottom Shoe Pads |
| F: Temporary Cassette End Cap | |



CAT. NO.	FINISH	MAX. INSIDE JAMB OPENING	SCREEN WIDTH		
			1	6	12
RW31W	White	787 mm (31")			
RW31ALM	Almond	787 mm (31")			
RW31BRZ	Bronze	787 mm (31")			
RW39W	White	990 mm (39")			
RW39ALM	Almond	990 mm (39")			
RW39BRZ	Bronze	990 mm (39")			
RW47W	White	1194 mm (47")			
RW47ALM	Almond	1194 mm (47")			
RW47BRZ	Bronze	1194 mm (47")			
RW55W	White	1397 mm (55")			
RW55ALM	Almond	1397 mm (55")			
RW55BRZ	Bronze	1397 mm (55")			

Minimum order: 1 each. Sizes and finishes can be combined for quantity pricing.

CRL Euro Retractable Screen Door Kits for Single and Double Doors

NEW!

SAVE 10%

- Fits Most Single Patio Doors Up to 1.2 Metres Wide
- Two Standard Heights: 2.2 and 2.5 Metres
- Cut and Assemble on the Job Site for Fast, Easy Installation on In-Swing and Out-Swing Doors
- Three Decorative Powder Coated Finishes

CRL Euro Retractable Screen Doors utilize unique design features and versatility to fit most applications. The top and bottom rails, plus the jamb and screen pocket, are made from extruded aluminium. The vinyl end caps and handle have a UV additive for long life. Each door has easy-to-see-through charcoal fiberglass screen wire.

Two CRL Euro Retractable Screen Door Kits can be used for double door installations. Kits contain special center latches that mount inside the top and bottom rails to secure both doors in the closed position. Doors can then be operated independently. No exterior mounted slide bolts are needed.

Kits are non-handed, so they're easily field reversible for left or right openings. It can be surface mounted on the outside of the door frame for in-swinging doors, or mounted inside of the door frame for out-swinging doors. Simple cuts with your saw sizes the door to the opening.

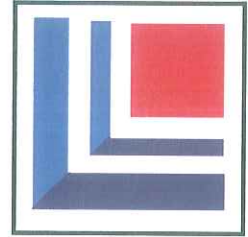
Each Kit comes complete with installation instructions for both internal mounting and surface mounting in an easy-to-follow format with clear, detailed illustrations.



WHITE		ALMOND		BRONZE		MAXIMUM DOOR HEIGHT	1	3
CAT. NO.	FINISH	CAT. NO.	FINISH	CAT. NO.	FINISH			
ES88W	White	ES88ALM	Almond	ES88BRZ	Bronze	2.2 m (88")		
ES98W	White	ES98ALM	Almond	ES98BRZ	Bronze	2.5 m (98")		

Minimum order: 1 each. Sizes and finishes can be combined for quantity pricing.

Lance Locksmiths



Sash Window Repairs & Reconditioning

Restore your windows to their former functionality. Unlike plastic and aluminium, a wide range of repairs are possible with wooden windows. Indeed many that might appear to be beyond salvage have been restored to good working order. Often a deteriorated sash window merely requires the installation of some replacement parts.

- Restoration and Renewal
- **Sash cord replacement**
- Repairs and realignment of sashes
- Counter weight replacements
- Bead repairs and replacement
- Pulley service and repairs
- A range of security options
- Quality workmanship
- Rapid response
- Free quotations

Lance Locksmiths provide on-site service and repairs within the Sydney Metropolitan Area including the outer suburbs. For an extra charge we are happy to service areas immediately outside the Sydney area, such as Gosford and the Blue Mountains.

If you would like to know more, [email us](mailto:Lance@fl.net.au) today.

Lance@fl.net.au



A wooden sash window operates by counterbalance weights. The weight of the sash is offset by the weight of the balance. The cord is passed over the pulleys, this allows the transfer of the weight. These weights (generally cast iron or lead) travel up and down in the window cavity, concealed within the window frame.

There is sometimes a dividing strip inside the cavity to prevent the weights clashing. Access to the weights is by means of a removable pocket, usually cut into the inside of the window lining but occasionally found behind the archtrave.

Parting beads are set into grooves running down the length of the linings, holding the pockets in place and separating two sashes.